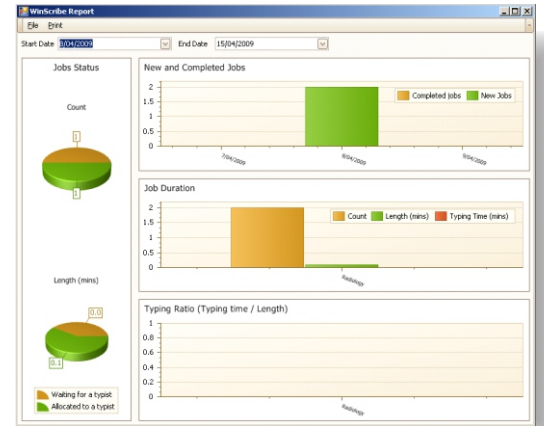


## See, measure and manage your dictation workflow

Winscribe reports are designed to provide a wide range of useful information that will assist you to manage your workflow and offer you an historical perspective to the throughput of dictation in your organization. In all there are over 70 standard reports to choose from. Some examples include;

- **Log file report.** This provides information on changes made to your facility by your system managers, for example, whether a manager made a change to typists' properties.
- **Input/output report.** This report displays the number of jobs that are dictated and the number of jobs that are typed in a given time period at your facility.
- **Typist Productivity report.** This displays how much time typists are spending typing jobs, as opposed to time inactive or on breaks. It also shows details of the jobs that have been typed, included how long it took to type them and the size of the audio file.
- **Disk Usage report.** Which shows you the amount of free and used storage space on your Winscribe Server.
- **Calls report.** This displays telephone line utilization for your facility. Use this report to determine if you have sufficient telephone ports during peak periods



The Winscribe Client application, which is utilised by typists, also includes in-built reporting. Productivity reports show data from the Winscribe Client application in a graphical way, including the number of jobs completed within a selected timeframe, typing time and other data. Typists with management permissions are able to report on other people within their group(s).

Home > AuthorDetail

Author: Jeff Bridges From Date: 2/12/2009 To Date: 2/03/2011

### Author Detailed Completion Report

Jeff Bridges


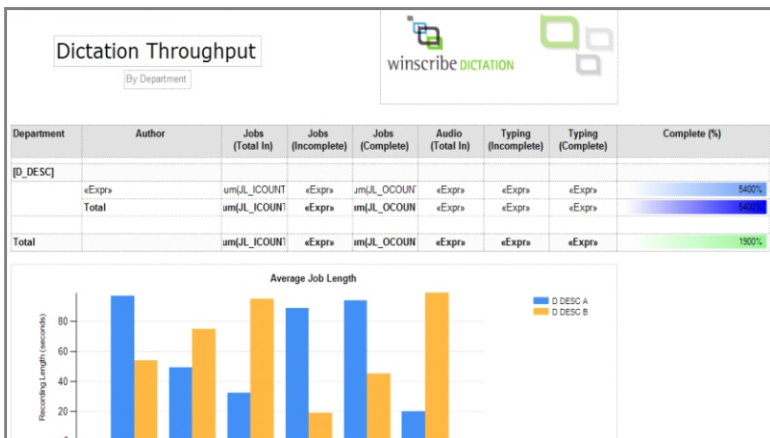
Notes	Length	Sent	Priority	Required By	Transcription Time	Exported
	0:00:11	2/19/2011 4:24:00 PM	High	2/20/2011 4:24:00 PM	0:00:07	
	0:00:11	2/19/2011 4:24:00 PM	High	2/20/2011 4:24:00 PM	0:00:17	
	0:00:16	2/24/2011 7:34:00 PM	High	2/25/2011 7:34:00 PM	0:00:10	
	0:00:30	2/19/2011 1:57:00 PM	High	2/20/2011 1:57:00 PM	0:01:22	
	0:00:10	2/21/2011 9:27:00 PM	High	2/22/2011 9:27:00 PM	0:00:12	
	0:00:03	1/28/2011 3:21:00 PM	High	1/29/2011 3:21:00 PM	0:00:08	

3/2/2011 10:49:57 PM

### Department Throughput

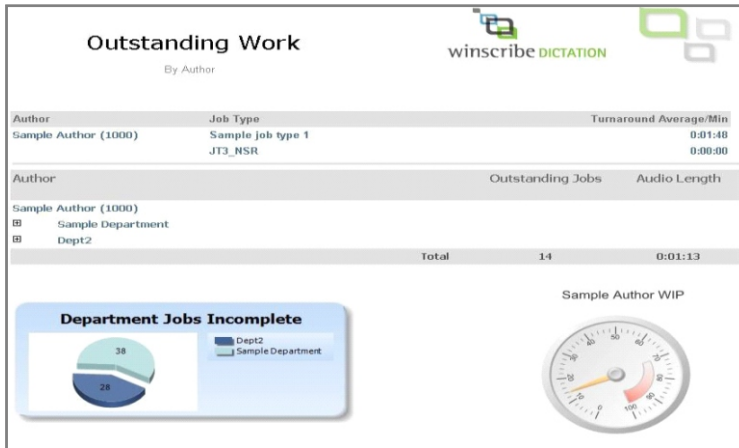
Department	Typist	Month	Job Count	Total Audio	Job Turnaround	Avg/Min
Commercial Department	3000	February, 2011	3	0:00:56	19:11:27	20:33:42
		March, 2011	1	0:00:05	2298:43:28	27584:41:36
	3001	February, 2011	2	0:00:22	344:05:43	538:26:30
	3002	February, 2011	1	0:00:03	701:07:53	14022:37:40
<b>Total</b>	<b>7</b>	<b>0:01:26</b>	<b>3363:08:31</b>	<b>2346:22:41</b>		
Conveyencing Department	3003	February, 2011	1	0:00:09	78:28:37	523:10:47
	<b>Total</b>	<b>1</b>	<b>0:00:09</b>	<b>78:28:37</b>	<b>523:10:47</b>	
<b>Total</b>	<b>8</b>	<b>0:01:35</b>	<b>3441:37:08</b>	<b>2173:38:15</b>		

Average time to type 1 min of audio

The Winscribe Web Management application provides excellent inbuilt reporting capability and a wide range of report data, examples of reports available are documented below. Additionally the Winscribe database (SQL Server) is an open database allowing user defined custom reports to be generated and produced in third party applications such as Crystal Reporting™.

All reports can be previewed on screen, printed or output to a file format; file formats include Microsoft Word (doc), Adobe Acrobat (pdf), Microsoft Excel (xls) and Rich Text Format (rtf). Outputting information to another file format allows for easy manipulation of the data including producing charts, graphs, etc.



- Efficient Time Management
- Export Reports to Excel
- Reduce Overtime Costs
- Monitor Productivity

### Typist Daily Productivity Report

Printed On 2010/08/12

From 2010/07/01 To 2010/07/31 for Typists from 9021 To 9203

Date	Time			Jobs Completed Today				Avg Difficulty
	Typing	On Breaks	Inactive	Length	Count	Typing Time	Revenue	
9021	Alice C							
2010/07/01	0:46:16	0:00:00	1:00:18	0:43:14	25	6:13:34	R 0.00	1.0
2010/07/02	1:47:33	0:00:00	1:30:51	0:27:21	15	3:57:24	R 0.00	1.0
2010/07/03	0:00:00	0:00:00	0:00:00	0:00:00	0	0:00:00	R 0.00	0.0
2010/07/05	0:00:00	0:00:00	0:00:00	0:00:00	0	0:00:00	R 0.00	0.0
2010/07/06	0:00:00	0:00:00	0:00:00	0:00:00	0	0:00:00	R 0.00	0.0
2010/07/07	1:42:10	0:00:00	2:14:52	0:15:14	6	2:10:03	R 0.00	1.0
2010/07/08	0:37:46	0:00:00	1:20:09	0:12:54	8	2:52:09	R 0.00	1.0
2010/07/09	1:14:49	0:00:00	2:31:40	0:27:51	16	3:25:07	R 0.00	1.0
2010/07/11	0:00:36	0:00:00	0:01:01	0:00:00	0	0:00:00	R 0.00	0.0
2010/07/12	2:33:28	0:00:00	3:36:56	0:39:06	15	4:35:36	R 0.00	1.0
2010/07/13	2:44:17	0:00:00	3:50:08	0:37:04	22	6:20:29	R 0.00	1.0
2010/07/14	2:20:44	1:04:34	2:33:33	0:28:26	14	3:53:23	R 0.00	1.0
2010/07/15	0:00:00	0:00:00	0:00:00	0:00:00	0	0:00:00	R 0.00	0.0
2010/07/16	2:10:20	0:00:00	2:08:28	0:26:27	13	4:01:53	R 0.00	1.0
2010/07/17	0:00:00	0:00:00	0:00:00	0:00:00	0	0:00:00	R 0.00	0.0
2010/07/19	1:41:30	0:00:00	2:06:09	0:18:17	11	2:32:46	R 0.00	1.0
2010/07/20	2:23:52	0:00:00	1:18:42	0:33:22	16	3:56:24	R 0.00	1.0
2010/07/21	0:00:00	0:00:08	0:01:49	0:00:00	0	0:00:00	R 0.00	0.0
2010/07/22	1:25:38	0:00:00	0:02:48	0:18:22	2	1:25:39	R 0.00	1.0
2010/07/23	0:00:00	0:00:00	0:00:00	0:00:00	0	0:00:00	R 0.00	0.0
2010/07/24	0:00:00	0:00:00	0:00:00	0:00:00	0	0:00:00	R 0.00	0.0
2010/07/25	5:37:53	0:50:29	0:33:53	1:09:17	20	8:20:17	R 0.00	1.0
2010/07/26	1:17:18	0:00:00	3:59:56	0:54:27	13	5:40:50	R 0.00	1.0
2010/07/27	2:13:27	0:00:00	3:05:27	0:34:03	18	4:25:02	R 0.00	1.0
2010/07/28	0:54:02	0:28:50	2:05:33	0:16:45	9	2:14:26	R 0.00	1.0
2010/07/29	1:14:27	0:00:00	1:48:09	0:16:01	11	2:04:08	R 0.00	1.0
2010/07/30	1:34:10	0:33:58	2:15:30	0:25:12	14	2:53:55	R 0.00	1.0
2010/07/31	0:00:00	0:00:00	0:00:00	0:00:00	0	0:00:00	R 0.00	0.0

"The system has increased the manageability of overall workflow for both authors and typists."

Sheila Joiner  
Project Leader  
Aberdeen County Council



Your trusted productivity improvement partner for over 15 years.

Please call us for assistance with orders or to book a demonstration

Tel: 011 887 1056 | Fax: 086 555 3833 | Email: info@winscribe.co.za